

**MODEL 16802-001**  
**15 CUBIC FOOT CAPACITY**  
**BEAR-PROOF FOOD STORAGE LOCKER**

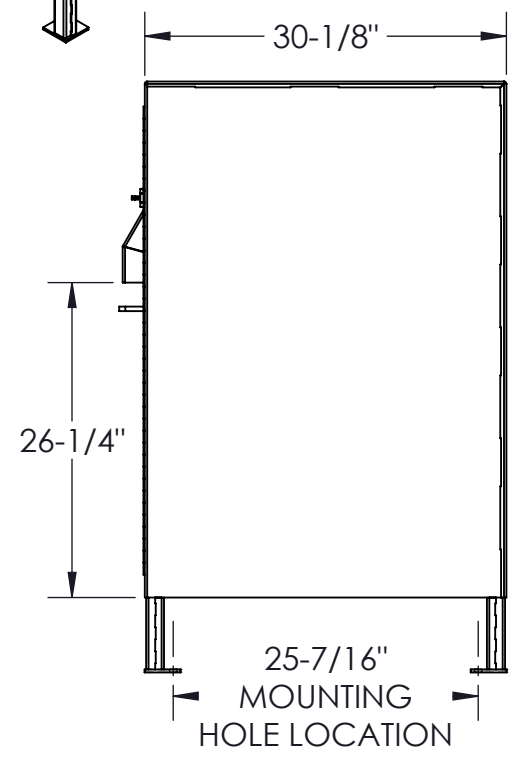
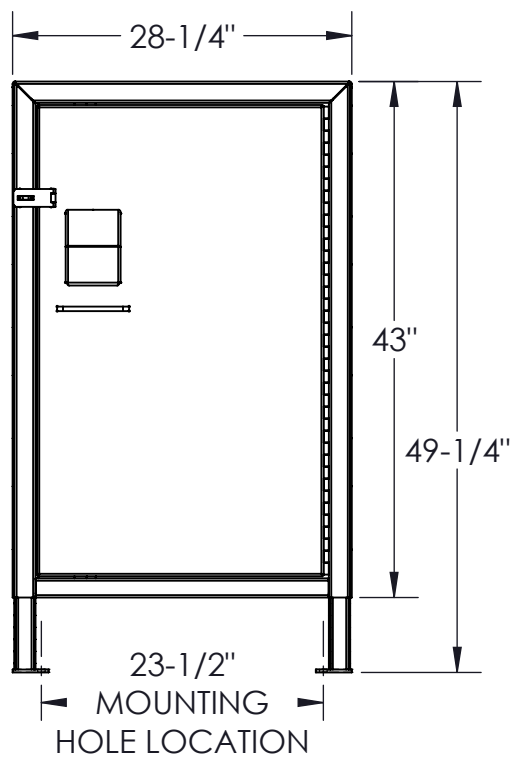
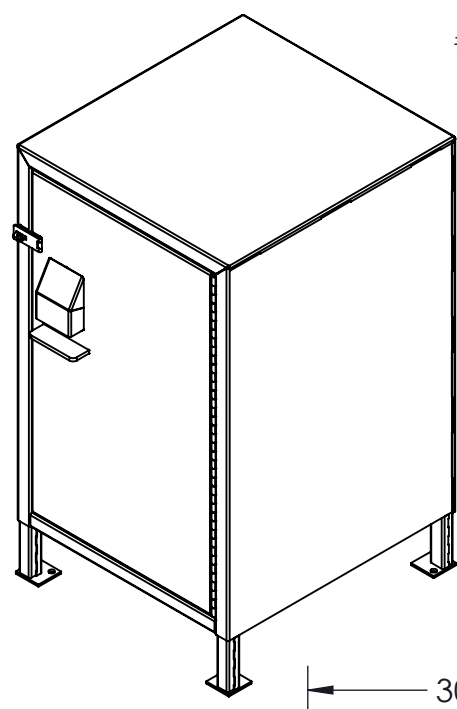


#16802-001 IGBC  
 CERTIFICATION  
 NUMBER 5221

This 15 cubic foot unit has enough room for trailheads,  
 day use area, tent areas & small campsites  
 Optional padlock hasp provides even further security.

**MECHANICAL SPECIFICATIONS**

- Door hinge is heavy duty stainless steel for superior corrosion resistance and longevity.
- Bear-proof 2 point self latching system with an inner, easy to operate child safety latch release mechanism.
- Unit is made fully with welded 14-gauge steel, reinforced bottom, top, & door add to the unit's longevity.
- 1/4" thick mounting plates for 1/2" anchor bolts. (not included) (See dimensions shown below)
- Powder coated for superior corrosion protection. Available in Forest Green, Blue, Brown, and Gray.
- Approx. weight: 210 lbs.



**WARNING: MUST BE PERMANENTLY MOUNTED**

CUSTOMER APPROVAL :

DATE :



THIS DRAWING, WHICH CONTAINS PROPRIETARY INFORMATION, IS THE PROPERTY OF JAMESTOWN ADVANCED PRODUCTS CORPORATION. IT SHALL NOT BE REPRODUCED IN ANY MANNER NOR DISCLOSED TO THIRD PARTIES WITHOUT WRITTEN PERMISSION OF JAMESTOWN ADVANCED PRODUCTS CORPORATION.

DATE : 12/21/17

PRODUCT PART NUMBER : 16802-001

REV. NO.

PRODUCT DESCRIPTION :  
 15 CU FT BEAR-PROOF FOOD LOCKER W/O TUBE

2855 GIRTS ROAD  
 JAMESTOWN, NY 14701