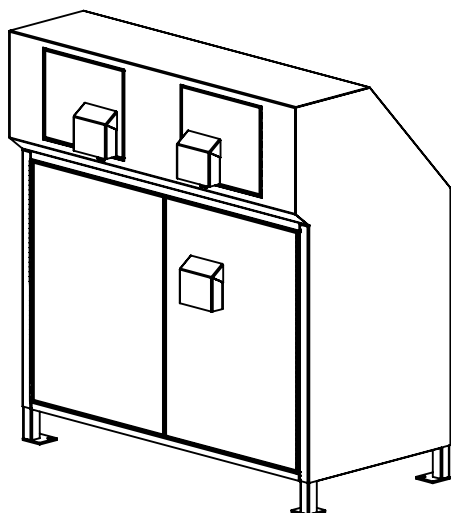


**MODEL 13408  
64 GALLON CAPACITY  
ANIMAL RESISTANT TRASH OR RECYCLE BIN**

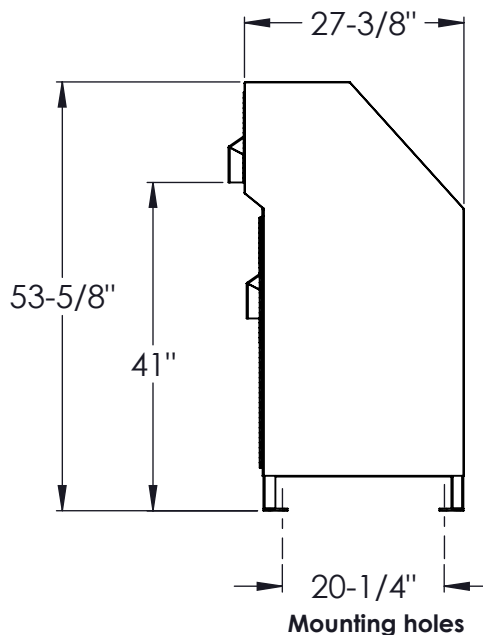
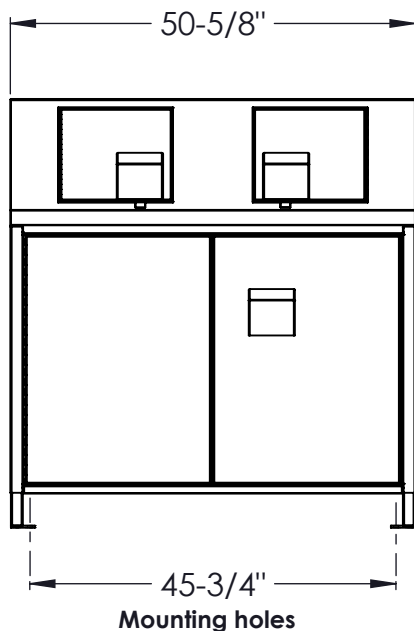


- Uses standard 32 gallon trash cans.
- Available in dual trash or recycle bins or a combination of both.
- ADA compliant.
- Easy access top loading chutes.
- Front service doors for easy trash can removal.
- Service door hasp for locking option..

**Mechanical Specifications**

- Door hinges are heavy duty stainless steel for superior corrosion resistance and longevity.
- Animal resistant internal single point self latching system on service doors.
- Welded 14 gauge construction.
- 1/4" mounting plates bored to fit 1/2" bolt. (see dimensions shown below).
- Powder coated for superior corrosion protection. Available in Forest Green, Blue, Brown, and Gray

EST. WT. 265lbs



**WARNING: MUST BE PERMANENTLY MOUNTED**

CUSTOMER APPROVAL :

DATE :

**JAMESTOWN**  
ADVANCED  
PRODUCTS  
CORPORATION

THIS DRAWING, WHICH CONTAINS PROPRIETARY INFORMATION, IS THE PROPERTY OF JAMESTOWN ADVANCED PRODUCTS CORPORATION. IT SHALL NOT BE REPRODUCED IN ANY MANNER NOR DISCLOSED TO THIRD PARTIES WITHOUT WRITTEN PERMISSION OF JAMESTOWN ADVANCED PRODUCTS CORPORATION.

DATE : 1/16/2008

PRODUCT PART NUMBER : 13408

REV. NO. 2 12/10/15

PRODUCT DESCRIPTION :  
ANIMAL RESISTANT TRASH/RECYCLE BIN

2855 GIRTS ROAD  
JAMESTOWN, NY 14701